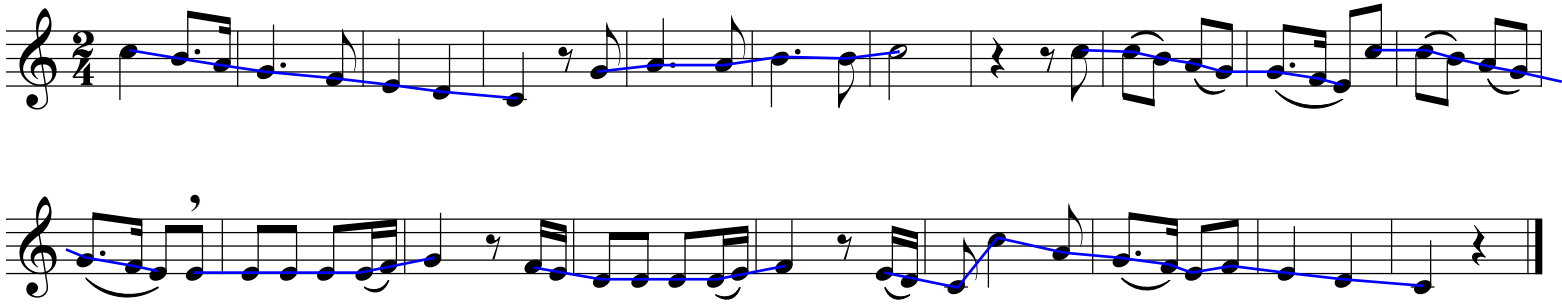


Joy to the World

Likely by Lowell Mason



All the pitches of the tune from the highest to the lowest are introduced in the opening major scale. Nothing is saved for later. Ascending and descending scalar passages are contrasted just after the midpoint by repeated pitches. Phrase lengths appear irregular, but five 4-bar segments are apparent if you ignore the pickup notes. (Curiously, the piece does not start with a pickup.) The carol ends much like it began with most of a descending major scale.