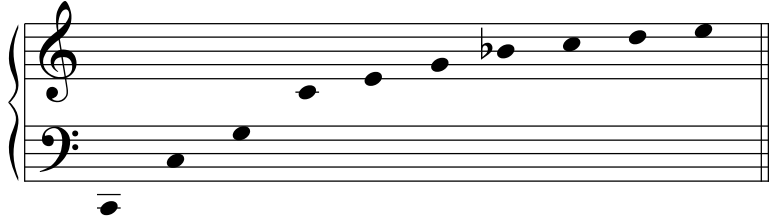
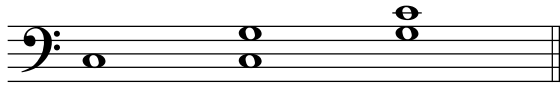


# Overtone Series



The B flat in the overtone series presented here is lower than an equal tempered B flat. In fact, with the exception of C, all of the notes are slightly different from equal tempered pitches. (Research temperament and tuning.)

Britten's *Serenade for Tenor, Horn, and Strings* Op. 31, opening, features a fantastic example of the next overtone.

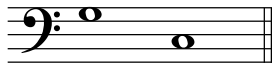


The only perfect intervals are the first 3 intervals of the overtone series—plus the perfect unison.

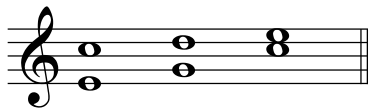
Perfect Octave      Perfect Fifth      Perfect Fourth



The major triad comes from nature.



The most important harmonic progression is root motion by descending perfect fifth.



Horn Fifths — Ask me.

The overtone series is also a major factor in our perception of timbre.

## Summary

