

On the final exam I will ask you to write the retrograde inversion of a tetrachord (4 note set) starting with such and such a pitch. (If you can do this, I know you can create a 12-tone matrix.)

For example, write the retrograde inversion of A-B \flat -E \flat -D \flat starting with B.

DON'T SKIP A STEP. It's easy to make silly mistakes.

Prime Form (original):



mi 2 P 4 M 2

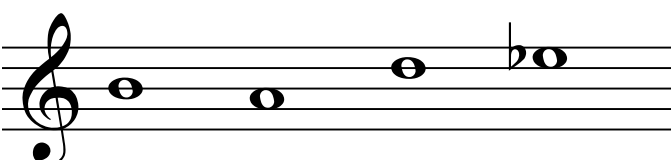
Inversion (opposite direction):



Retrograde Inversion (backwards):

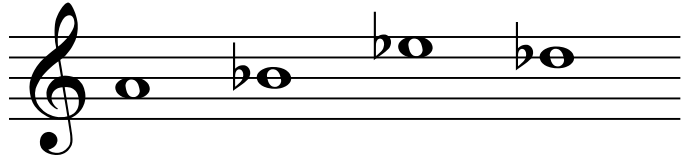


R. I. starting with B (transpose):

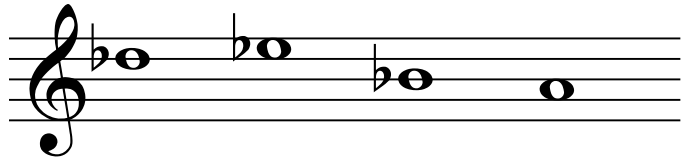


To check your work, perform the retrograde first and then invert that. Finally, transpose. You should generate the same result. (Scroll down.)

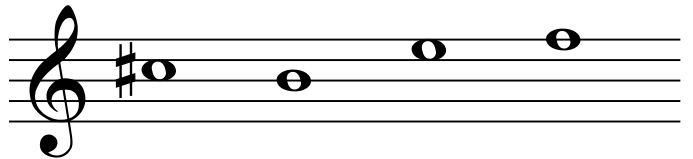
Prime:



Retrograde:



Inverted Retrograde:



Transposed:

