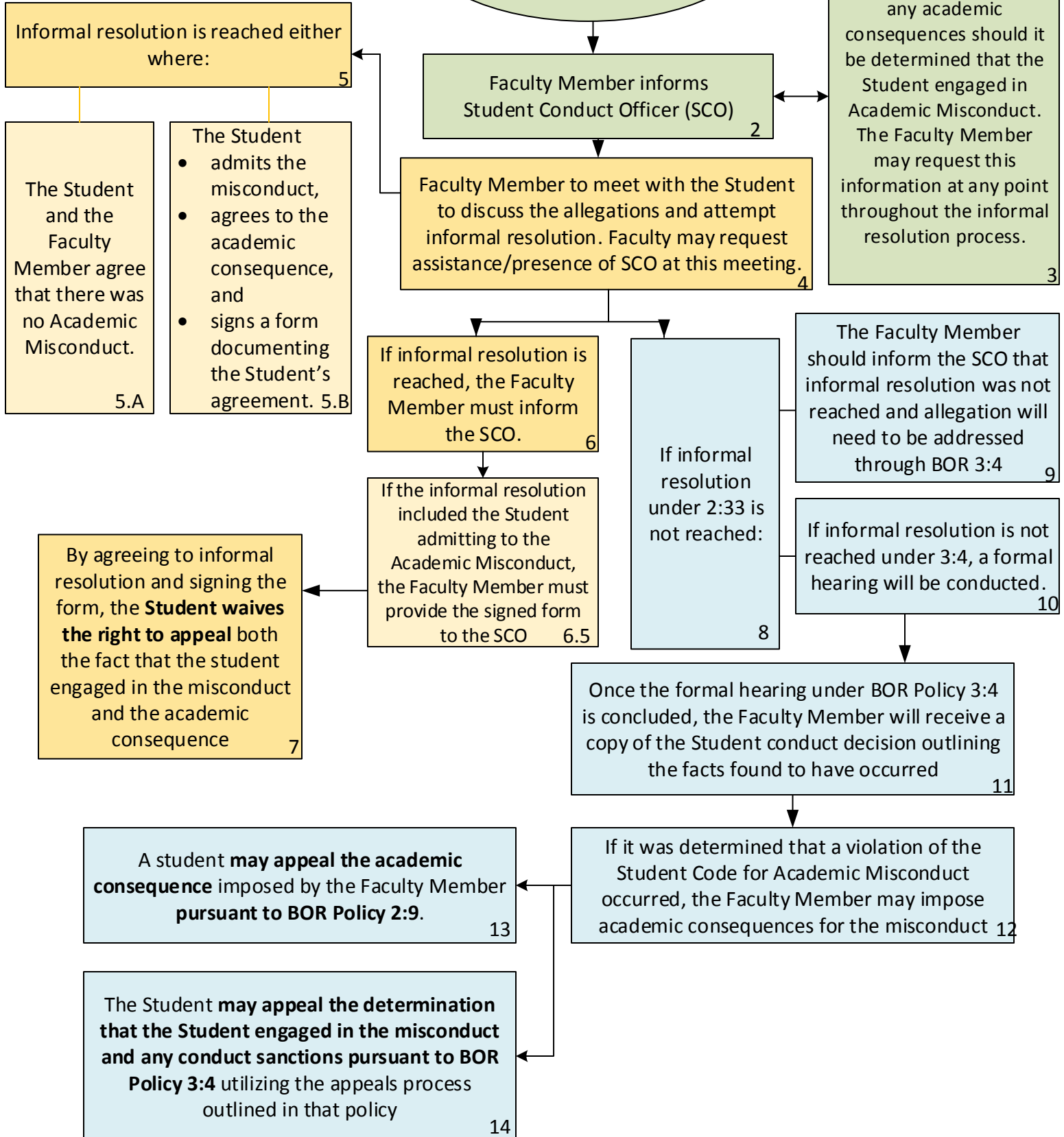


# BOR Policy 2:33 Student Academic Misconduct

Note: This map is meant as a companion to BOR Policy 2:33. If there is any discrepancy between the two, the policy takes precedent.



At the Faculty Member's request, the SCO will inform the Faculty Member whether the Student has ever engaged in Academic Misconduct, which may be used in determining any academic consequences should it be determined that the Student engaged in Academic Misconduct. The Faculty Member may request this information at any point throughout the informal resolution process.

Informal resolution is reached either where:

The Student and the Faculty Member agree that there was no Academic Misconduct.

- The Student
- admits the misconduct,
  - agrees to the academic consequence, and
  - signs a form documenting the Student's agreement.

Faculty Member to meet with the Student to discuss the allegations and attempt informal resolution. Faculty may request assistance/presence of SCO at this meeting.

If informal resolution is reached, the Faculty Member must inform the SCO.

If the informal resolution included the Student admitting to the Academic Misconduct, the Faculty Member must provide the signed form to the SCO

If informal resolution under 2:33 is not reached:

The Faculty Member should inform the SCO that informal resolution was not reached and allegation will need to be addressed through BOR 3:4

If informal resolution is not reached under 3:4, a formal hearing will be conducted.

By agreeing to informal resolution and signing the form, the **Student waives the right to appeal** both the fact that the student engaged in the misconduct and the academic consequence

Once the formal hearing under BOR Policy 3:4 is concluded, the Faculty Member will receive a copy of the Student conduct decision outlining the facts found to have occurred

A student **may appeal the academic consequence** imposed by the Faculty Member pursuant to BOR Policy 2:9.

If it was determined that a violation of the Student Code for Academic Misconduct occurred, the Faculty Member may impose academic consequences for the misconduct

The Student **may appeal the determination that the Student engaged in the misconduct and any conduct sanctions** pursuant to BOR Policy 3:4 utilizing the appeals process outlined in that policy